


PROTOTYPE				
E	5/9/22	Added installation photos and production drawings.	PAS	DAK
D	4/6/22	Prototype 2	PAS	DAK
C	1/27/21	Design 2	PAS	HCM
B	1/20/27	Prototype 1	PAS	HCM
REV	DATE	DESCRIPTION	BY	CK'D
		Bathroom Light Cover Prototypes	PAS	

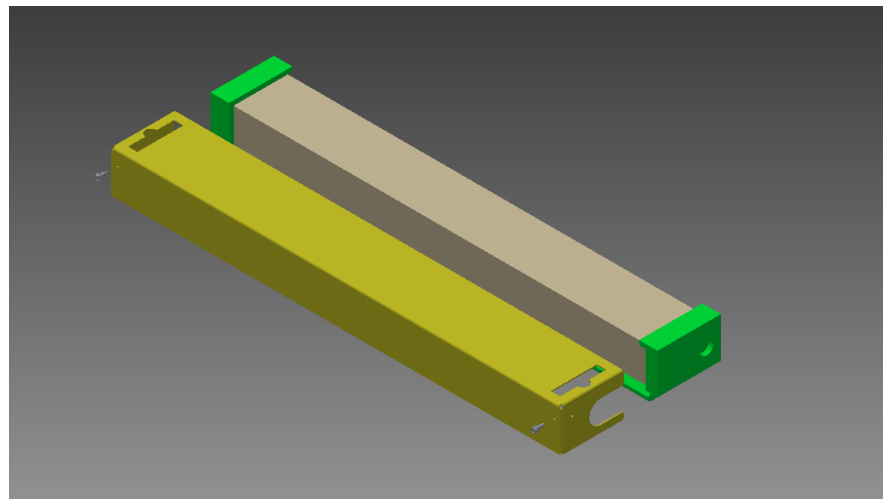
All dimensions in inches unless otherwise specified.

## 2 Design #1 Screenshots

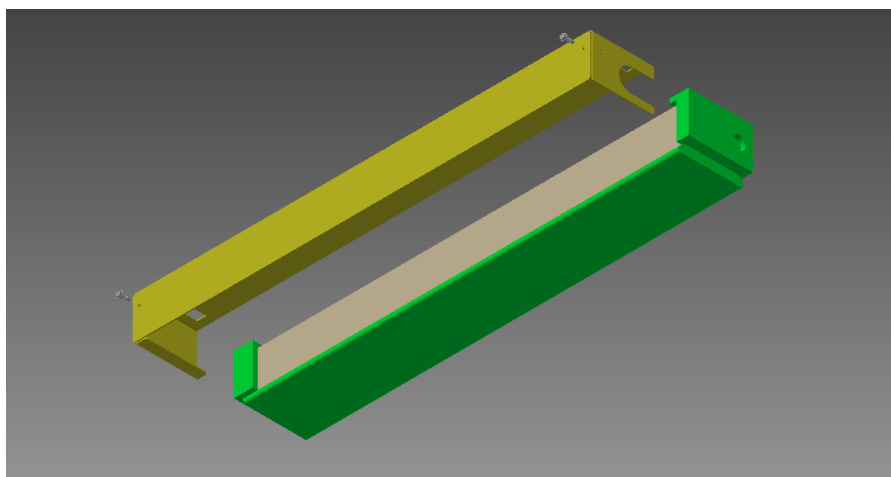
**File: Cover-01.ipt**

24.438 x 2.313 x 3.4 Stainless Steel light cover.

Conduit cut-out on right side.



Cover-01 Top Isometric View - CAD



Cover-01 Bottom Isometric View - CAD

**Reviewed:** Curtis McDowell 1/6/22

**Approved for Prototype:** Curtis McDowell 1/6/22

### 3 Prototype #1 Photos: Sheet Metal Fabrication



Cover-01 Top Isometric View - Photo



Cover-01 Bottom Isometric View - Photo

### 3.1 Observations

The lip on the bottom of the left flange makes installation difficult.  
The front face could be 1/4" taller.

### 3.2 Recommendations

Increase front face to 2.625 tall.  
Reposition conduit cutout on right side.

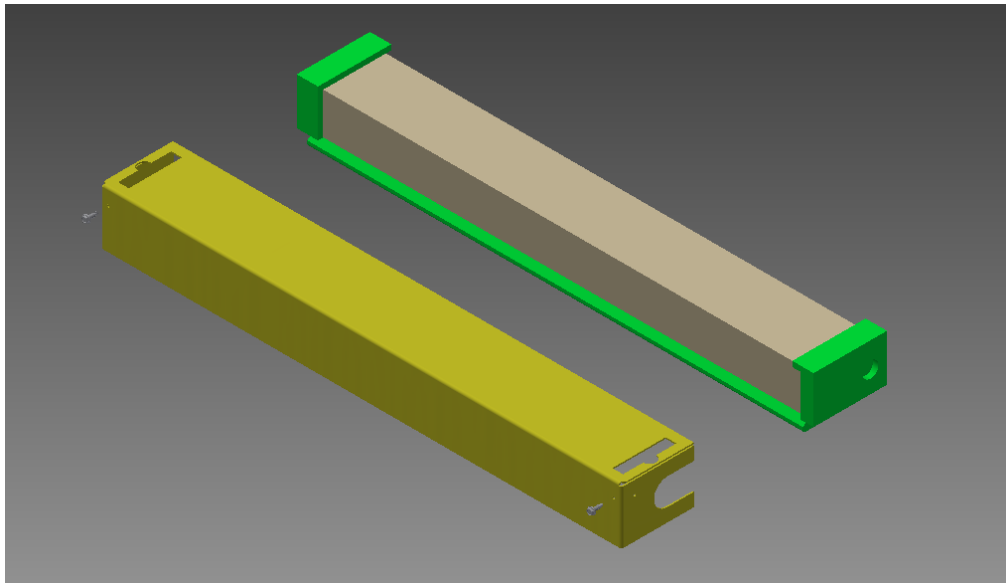
## 4 Design #2 Screenshots

**File: Cover-02.ipt**

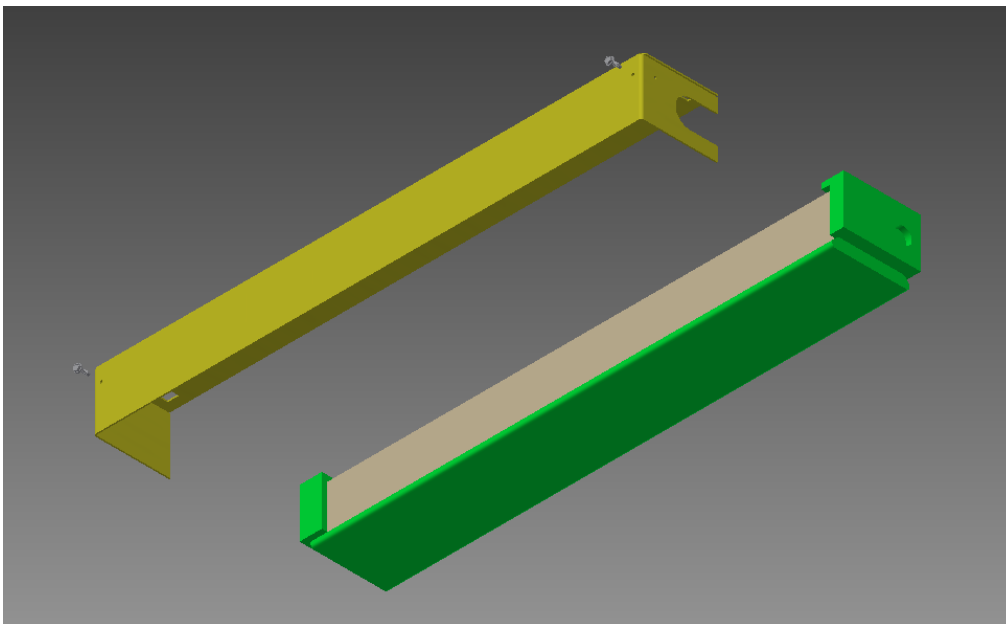
24.438 x 2.625 x 3.4 Stainless Steel light cover.

Conduit cut-out on right side.

### 4.1 Screenshots:



Cover-02 Top Isometric View - CAD

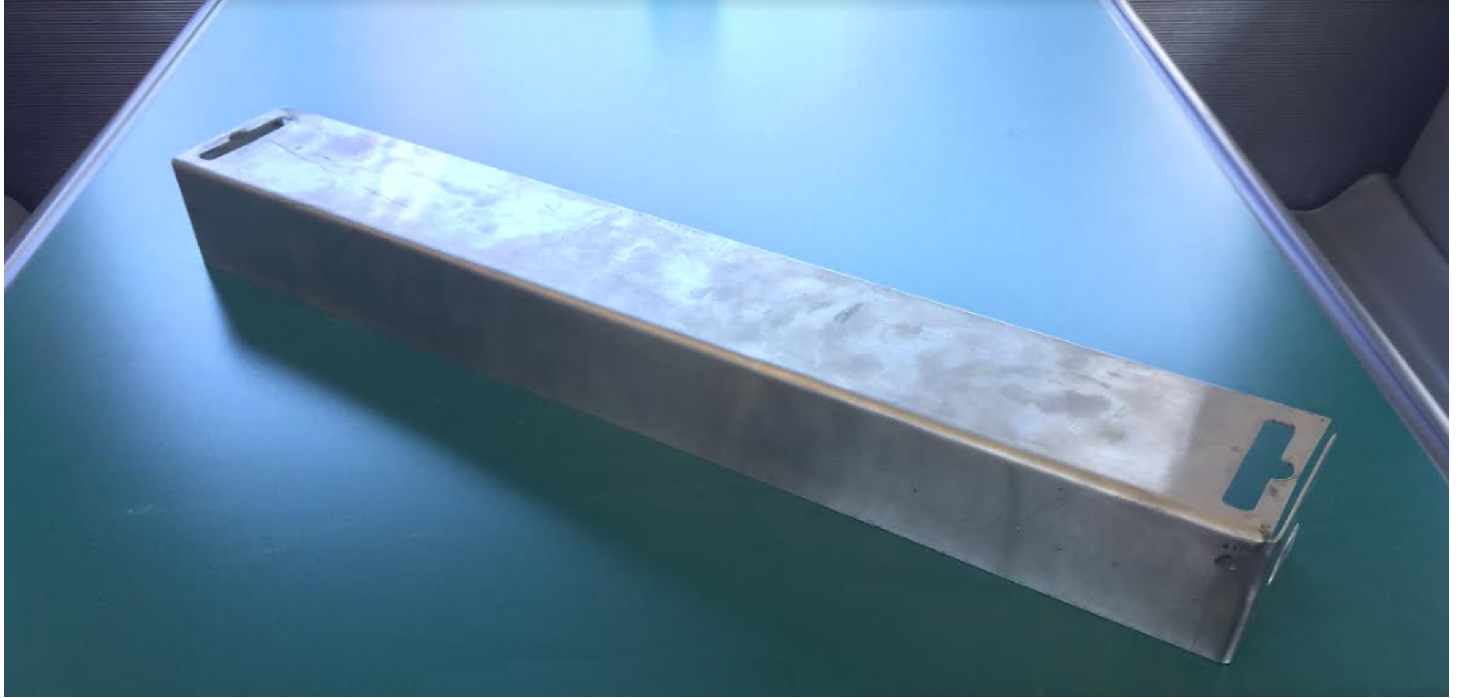


Cover-02 Bottom Isometric View - CAD

**Reviewed:** Dave Krajcovic 1/27/22

**Approved for Prototype:** Curtis McDowell 1/27/22

## 5 Prototype #2 Photos: Sheet Metal Fabrication



Cover-02 Top Isometric View - Photo

### 5.1 Observations

Cover fits the light fixture properly. Conduit cutout is on the wrong side.

### 5.2 Recommendations

Prepare manufacturing documentation.

**Reviewed:** Dave Krajcovic 4/6/22

**Approved for Prototype:** Dave Krajcovic 4/6/22

## 5 Installed on Train

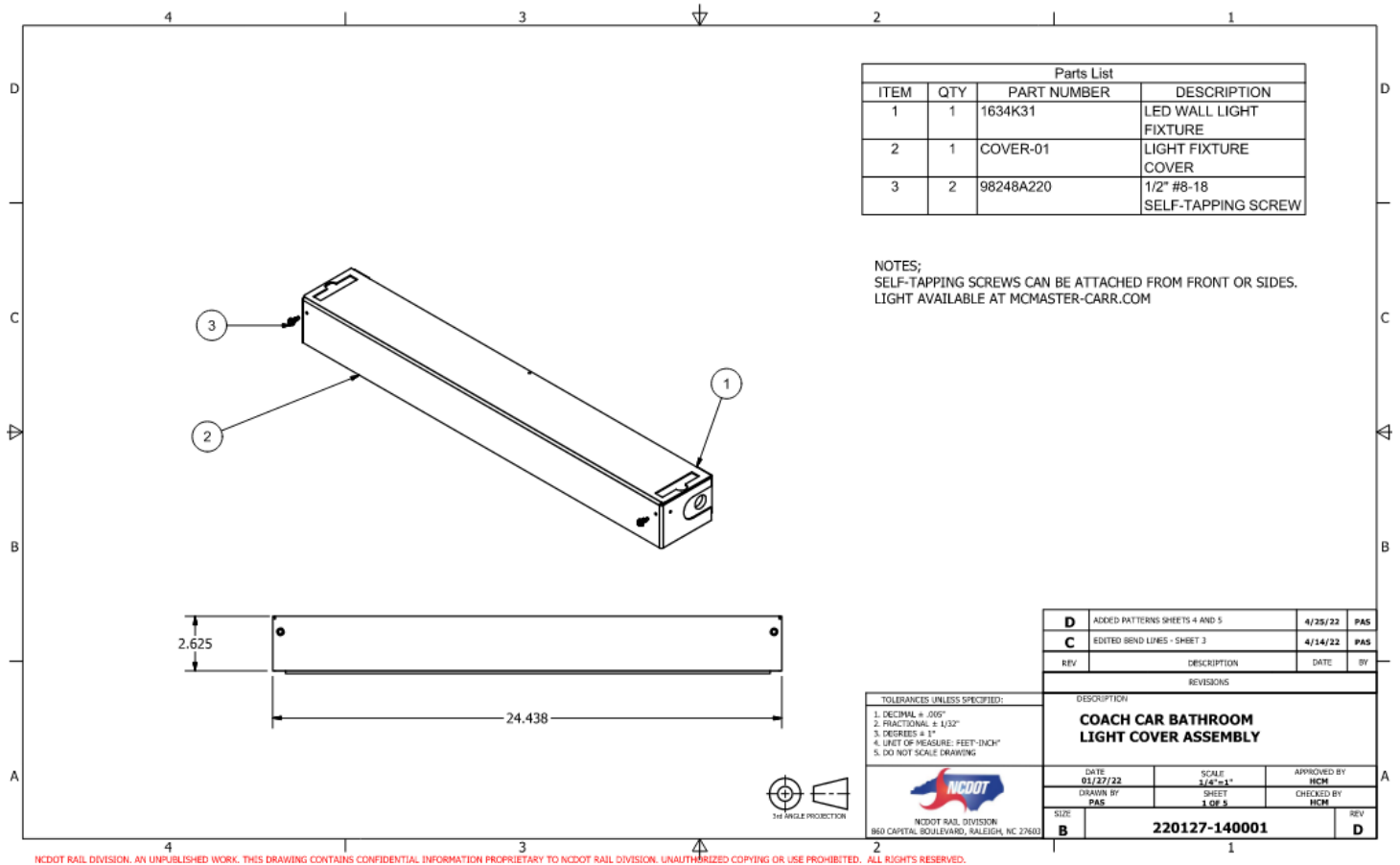






## Manufacturing Drawings

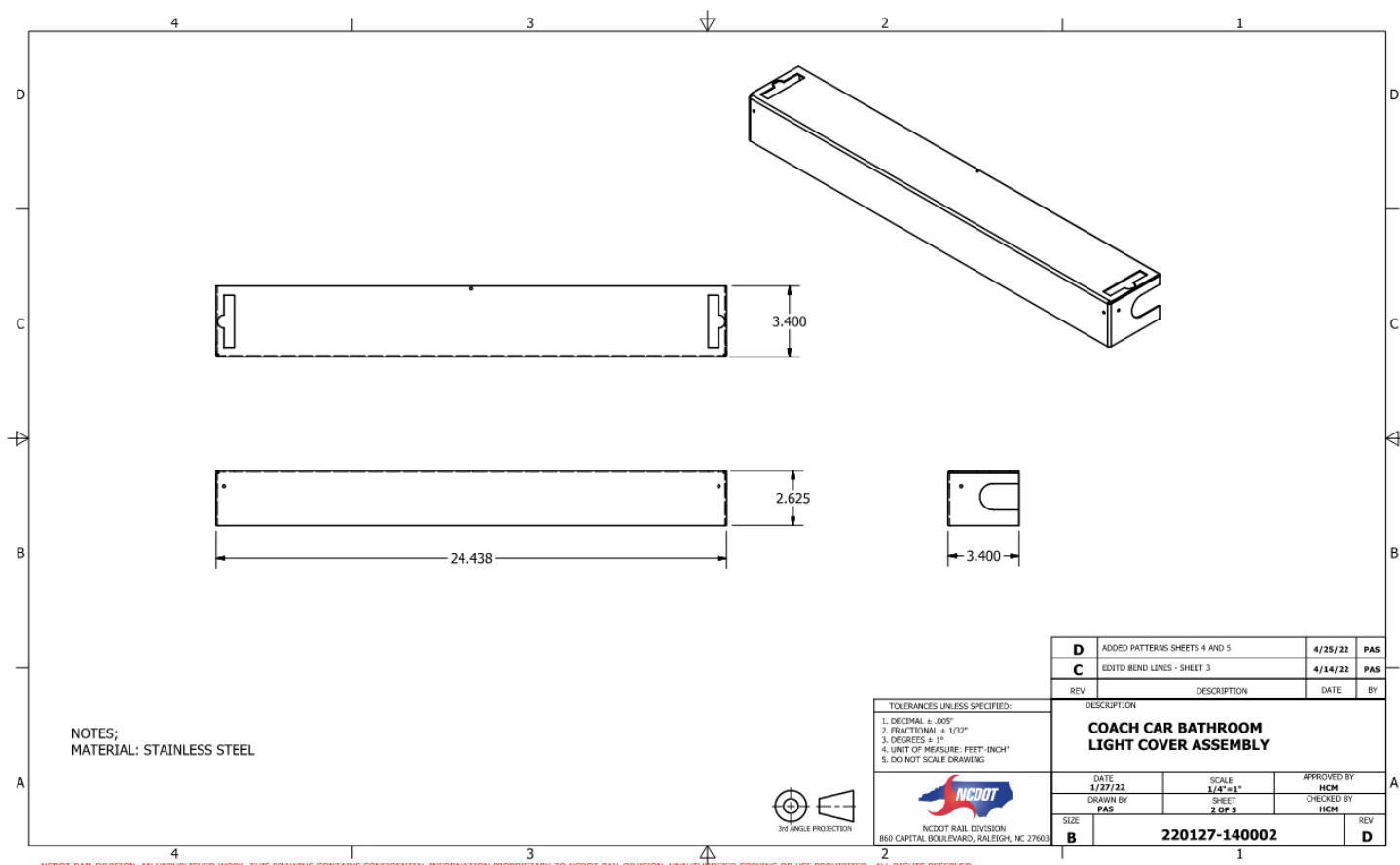
# Bathroom Light Cover Prototypes



NCDOT RAIL DIVISION. AN UNPUBLISHED WORK. THIS DRAWING CONTAINS CONFIDENTIAL INFORMATION PROPRIETARY TO NCDOT RAIL DIVISION. UNAUTHORIZED COPYING OR USE PROHIBITED. ALL RIGHTS RESERVED.

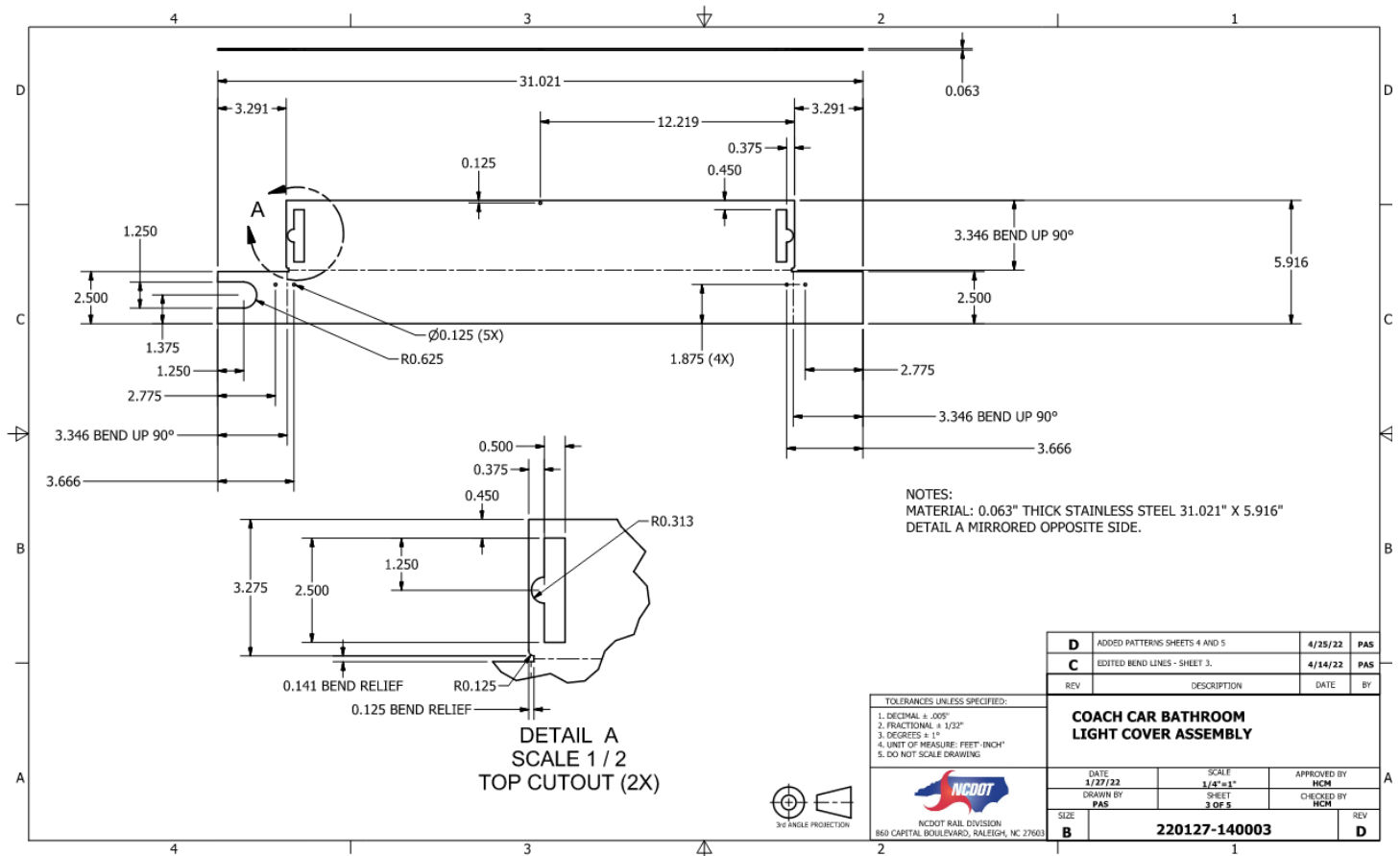


# Bathroom Light Cover Prototypes



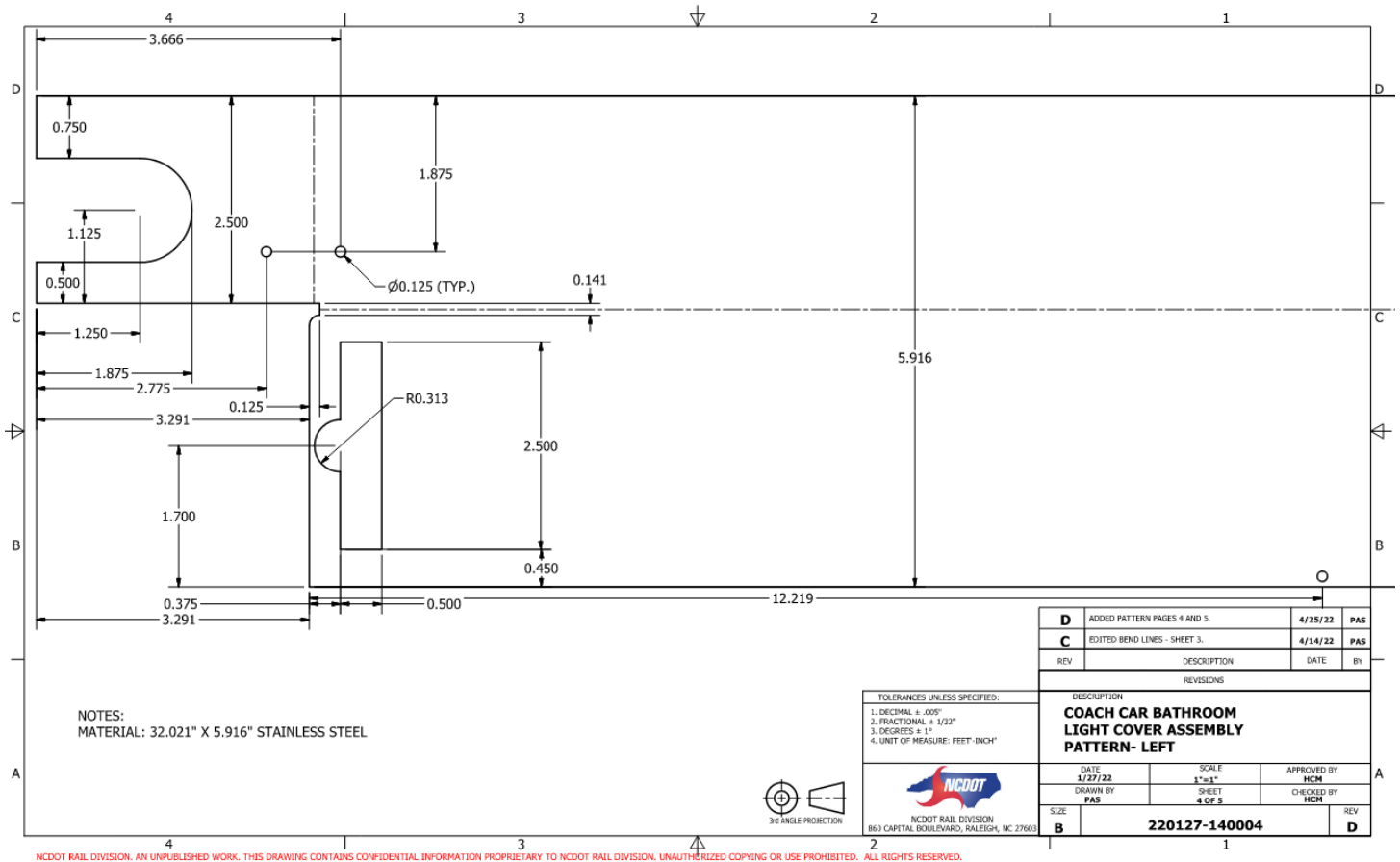
NCDOT RAIL DIVISION, AN UNPUBLISHED WORK. THIS DRAWING CONTAINS CONFIDENTIAL INFORMATION PROPRIETARY TO NCDOT RAIL DIVISION. UNAUTHORIZED COPYING OR USE PROHIBITED. ALL RIGHTS RESERVED.

# Bathroom Light Cover Prototypes



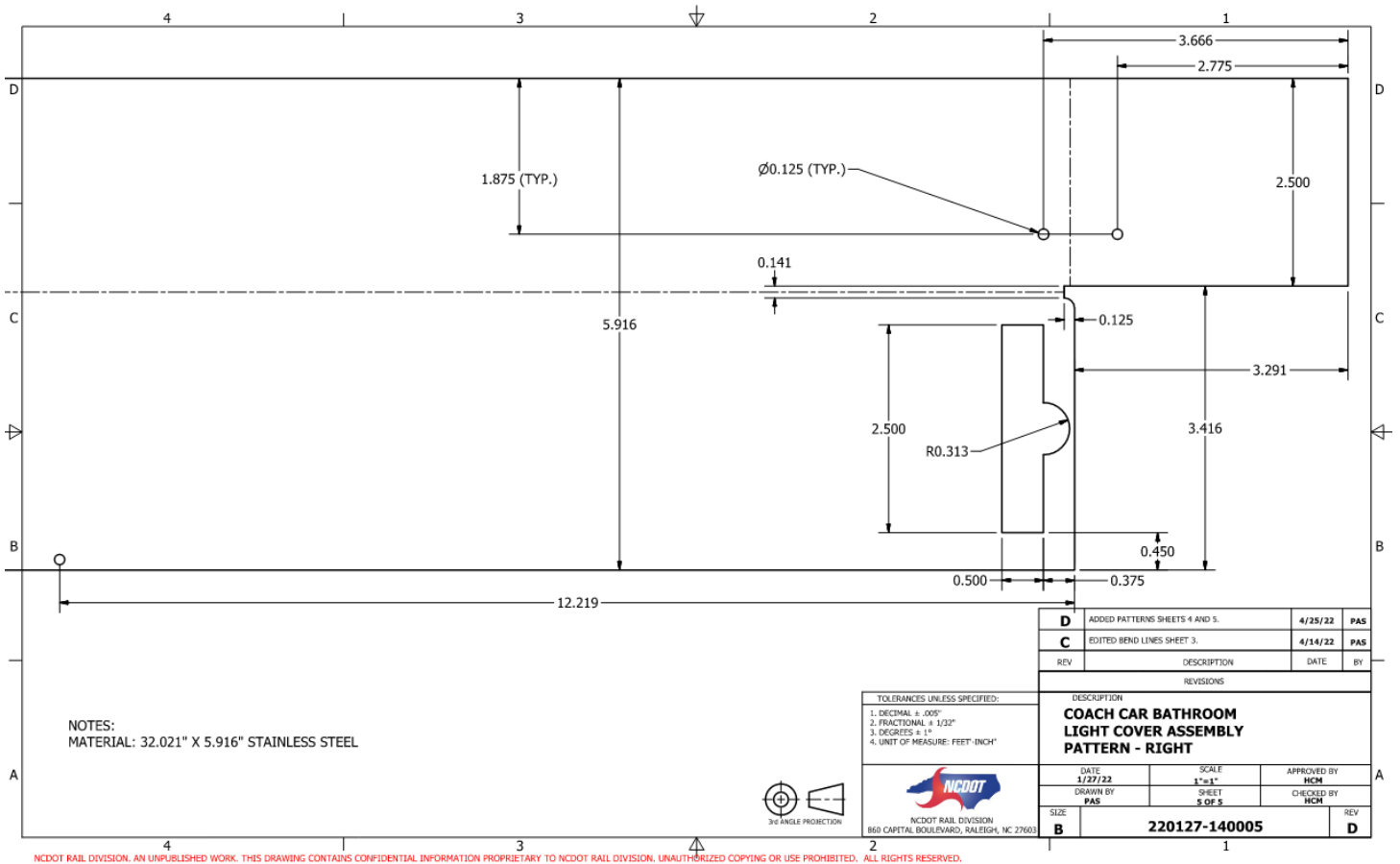
NCDOT RAIL DIVISION, AN UNPUBLISHED WORK. THIS DRAWING CONTAINS CONFIDENTIAL INFORMATION PROPRIETARY TO NCDOT RAIL DIVISION. UNAUTHORIZED COPYING OR USE PROHIBITED. ALL RIGHTS RESERVED.

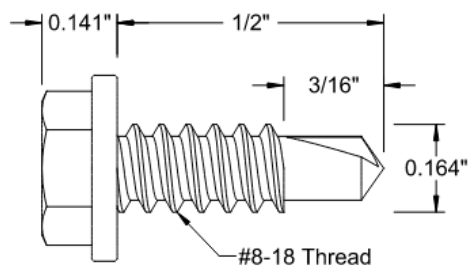
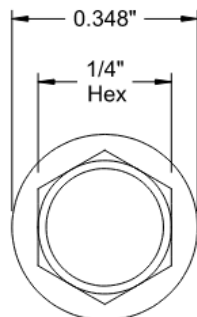
# Bathroom Light Cover Prototypes




NCDOT RAIL DIVISION. AN UNPUBLISHED WORK. THIS DRAWING CONTAINS CONFIDENTIAL INFORMATION PROPRIETARY TO NCDOT RAIL DIVISION. UNAUTHORIZED COPYING OR USE PROHIBITED. ALL RIGHTS RESERVED.

# Bathroom Light Cover Prototypes





<b>McMASTER-CARR</b> 	PART NUMBER <b>98248A220</b>
<a href="http://www.mcmaster.com">http://www.mcmaster.com</a> © 2021 McMaster-Carr Supply Company <small>Information in this drawing is provided for reference only.</small>	Aluminum Hex Head Drilling Screws